



priced from \$418,838

Images for illustration only

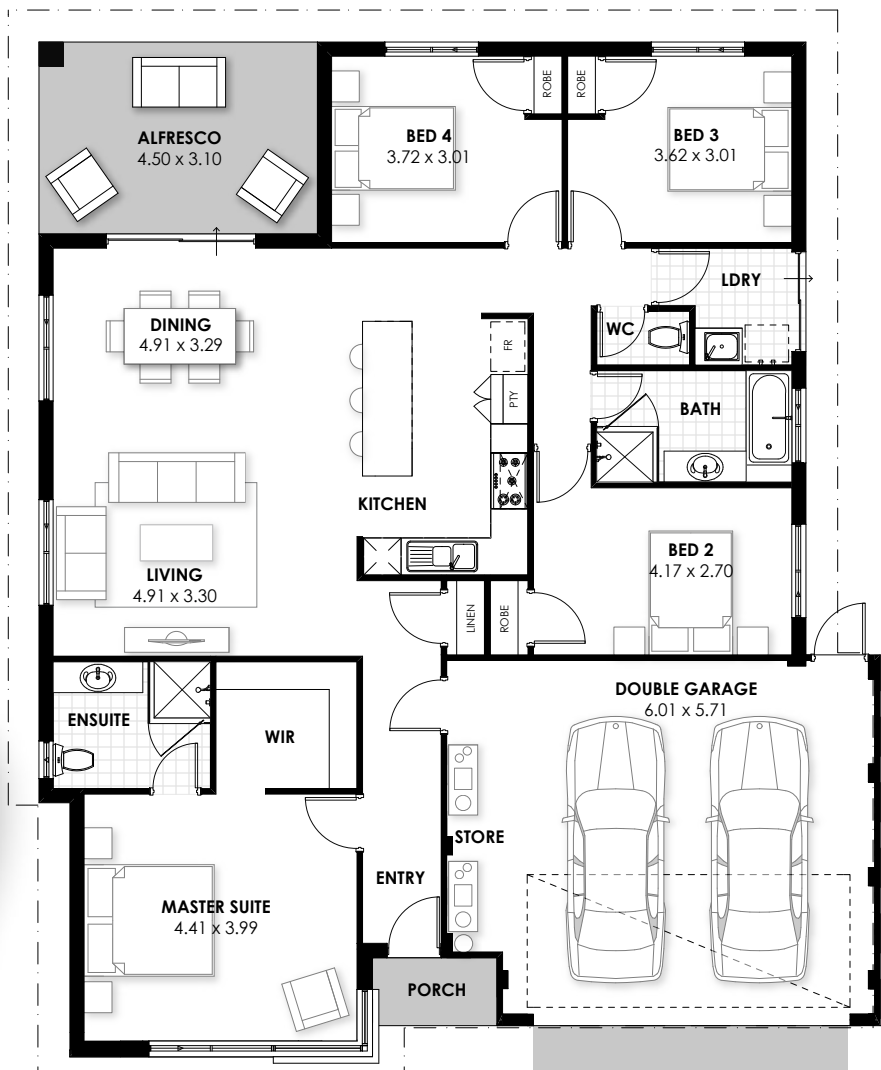
Lot 456 Prevelly Way East of the Beach, Eglinton

- choice of colorbond or tiled roof
- stainless steel 900mm appliances
- internal painting throughout
- custom WA made kitchens with stone benchtops
- crossover, soakwells and paving
- chrome or black matte taps
- 12 month maintenance period



THE BARBADOS
4 BED | 2 BATH | 2 CAR

MOVE HOMES
1300 381 495



As Move Homes is not the owner of the land, pricing and availability of the house and land package may change without notice. This includes but is not limited to provisional sitework costs, estate guidelines and council approvals. Images for illustration only. Visit our website for Terms & Conditions.