

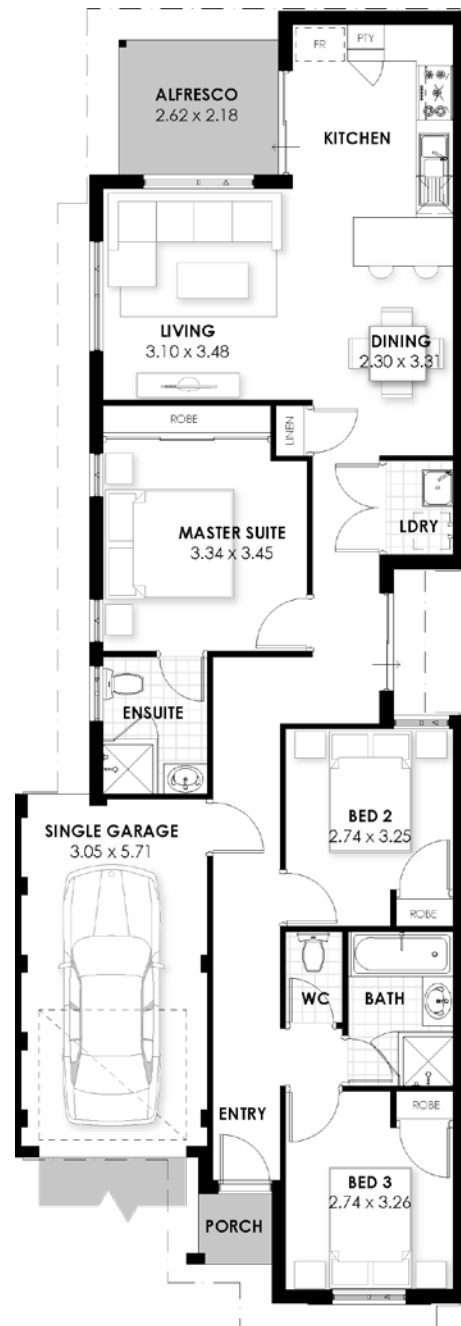


priced from ~~\$317,106~~ \$262,106*

*If you qualify for Government Grants
Images for illustration only

Sulan View

- carpets with underlay
- choice of floor tiles, luxury vinyl or hybrid planks
- venetian or vertical blinds
- choice of colorbond or tiled roof
- Fisher & Paykel 900mm appliances
- LED lighting to every room
- custom kitchens with stone benchtops
- crossover, soakwells and paving
- 12 month maintenance period



THE NEYO
3 BED | 2 BATH | 1 CAR
PHIL & TRACEY BARTLETT
0411 444 808



As Move Homes is not the owner of the land, pricing and availability of the house and land package may change without notice. This includes but is not limited to provisional sitework costs, estate guidelines and council approvals. Images for illustration only. Visit our website for Terms & Conditions.