

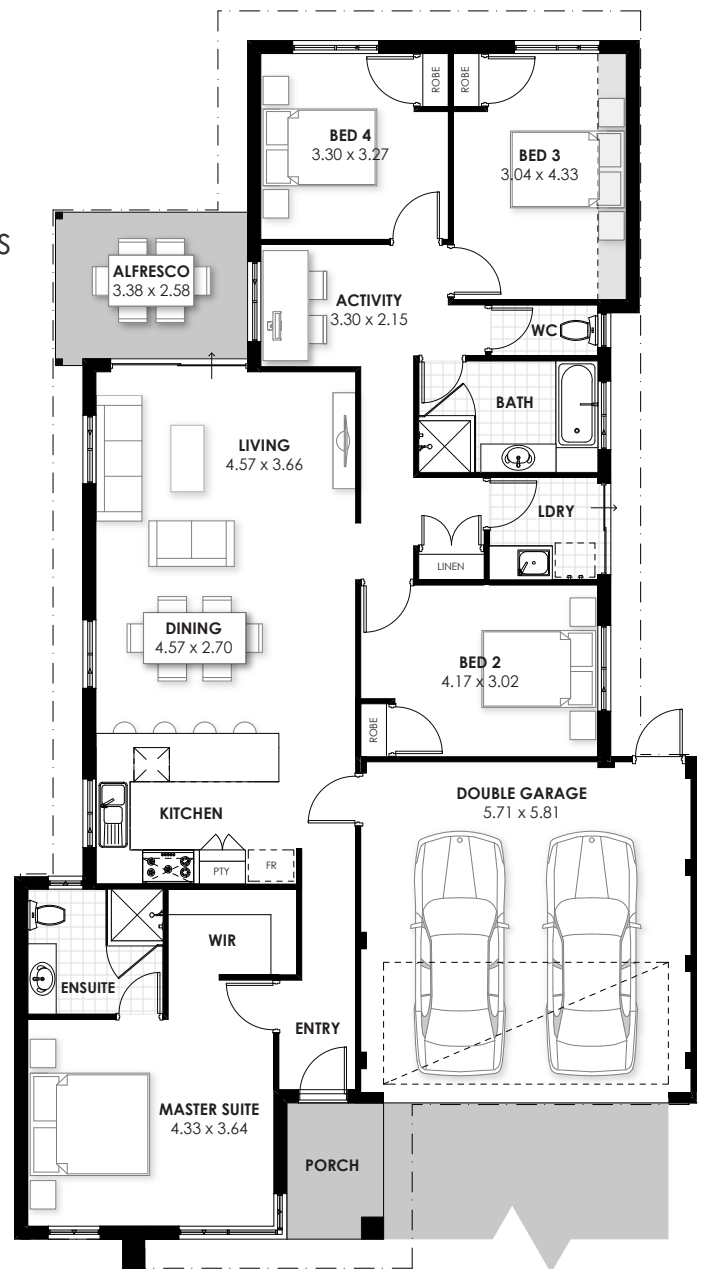


priced from \$432,116

Images for illustration only

# Forrestdale

- carpets with underlay
- choice of floor tiles, luxury vinyl or hybrid planks
- venetian or vertical blinds
- choice of colorbond or tiled roof
- Fisher & Paykel 900mm appliances
- LED lighting to every room
- custom kitchens with stone benchtops
- crossover, soakwells and paving
- 12 month maintenance period



THE ST LUCIA  
 4 BED | 2 BATH | 2 CAR  
 PHIL & TRACEY BARTLETT  
 0411 444 808



As Move Homes is not the owner of the land, pricing and availability of the house and land package may change without notice. This includes but is not limited to provisional sitework costs, estate guidelines and council approvals. Images for illustration only. Visit our website for Terms & Conditions.

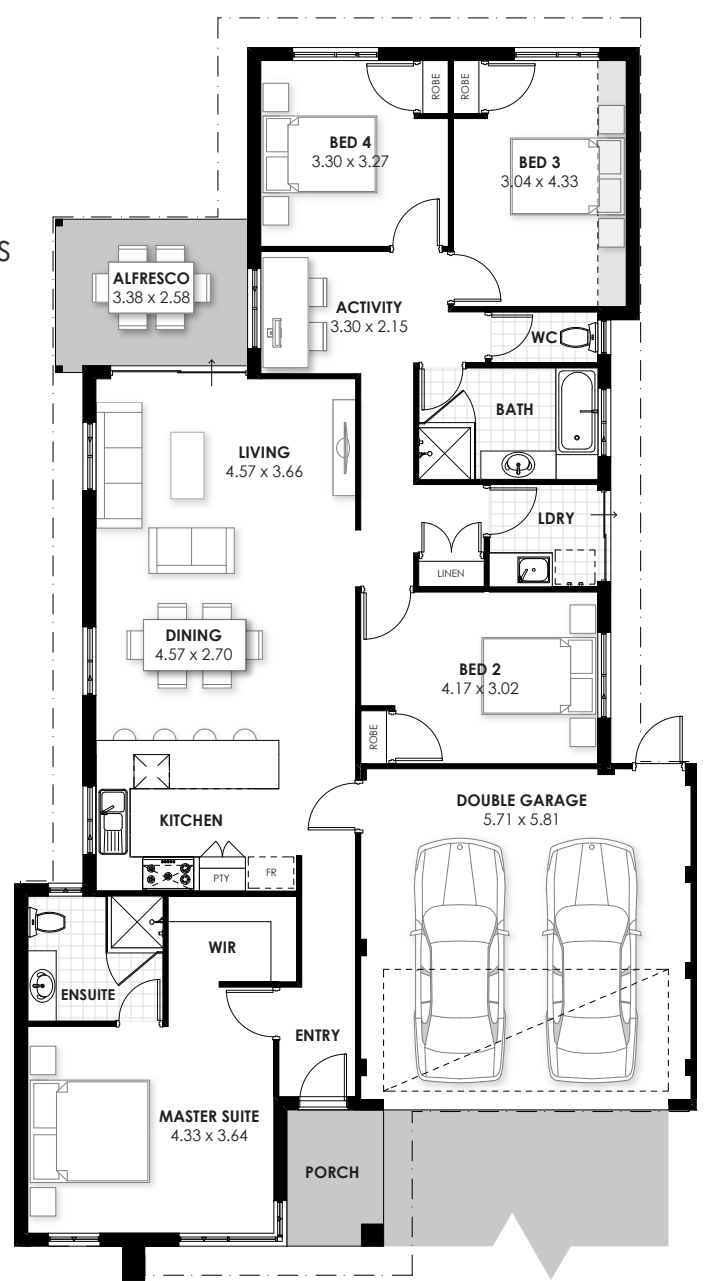
\$55,000 grants taken off!



priced from \$377,116 Images for illustration only

# Forrestdale

- carpets with underlay
- choice of floor tiles, luxury vinyl or hybrid planks
- venetian or vertical blinds
- choice of colorbond or tiled roof
- Fisher & Paykel 900mm appliances
- LED lighting to every room
- custom kitchens with stone benchtops
- crossover, soakwells and paving
- 12 month maintenance period



THE ST LUCIA  
 4 BED | 2 BATH | 2 CAR  
 PHIL & TRACEY BARTLETT  
 0411 444 808

As Move Homes is not the owner of the land, pricing and availability of the house and land package may change without notice. This includes but is not limited to provisional sitework costs, estate guidelines and council approvals. Images for illustration only. Visit our website for Terms & Conditions.

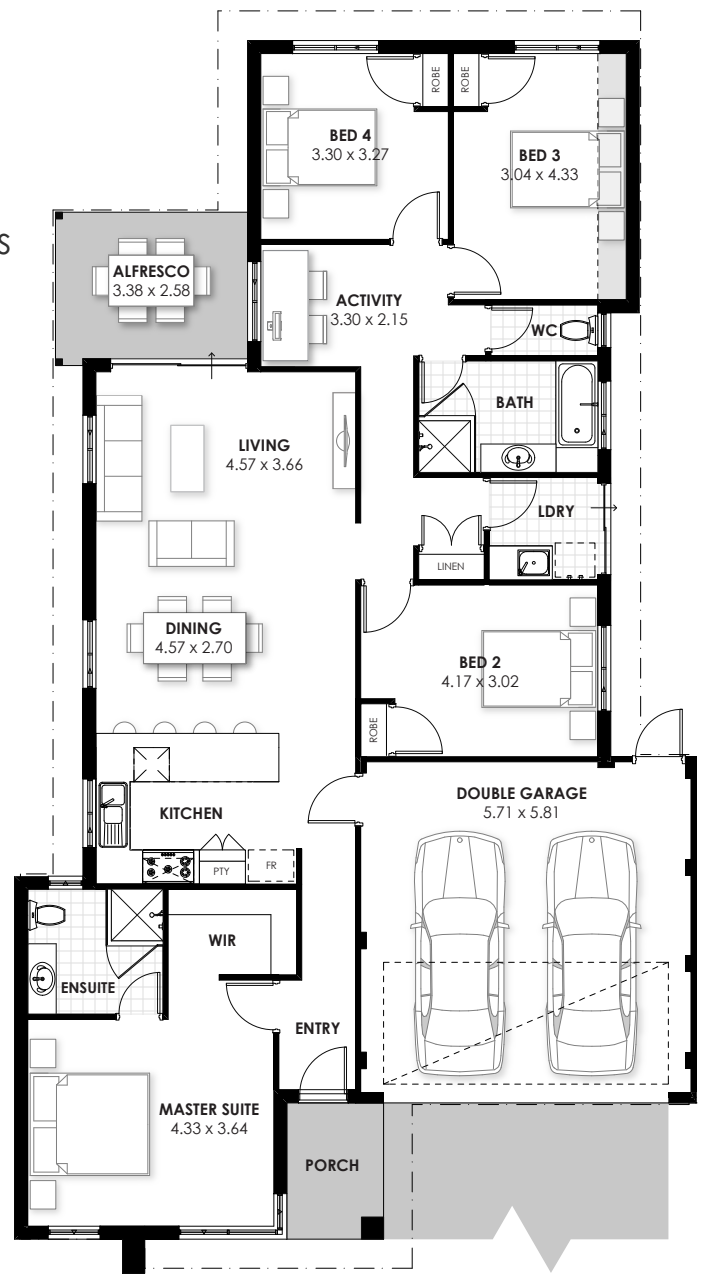


**\$55,000**  
of grants!

**priced from \$377,116** Images for illustration only

# Forrestdale

- carpets with underlay
- choice of floor tiles, luxury vinyl or hybrid planks
- venetian or vertical blinds
- choice of colorbond or tiled roof
- Fisher & Paykel 900mm appliances
- LED lighting to every room
- custom kitchens with stone benchtops
- crossover, soakwells and paving
- 12 month maintenance period



**THE ST LUCIA**  
**4 BED | 2 BATH | 2 CAR**  
**PHIL & TRACEY BARTLETT**  
**0411 444 808**



As Move Homes is not the owner of the land, pricing and availability of the house and land package may change without notice. This includes but is not limited to provisional sitework costs, estate guidelines and council approvals. Images for illustration only. Visit our website for Terms & Conditions.



priced from ~~\$434,116~~ \$379,116\*

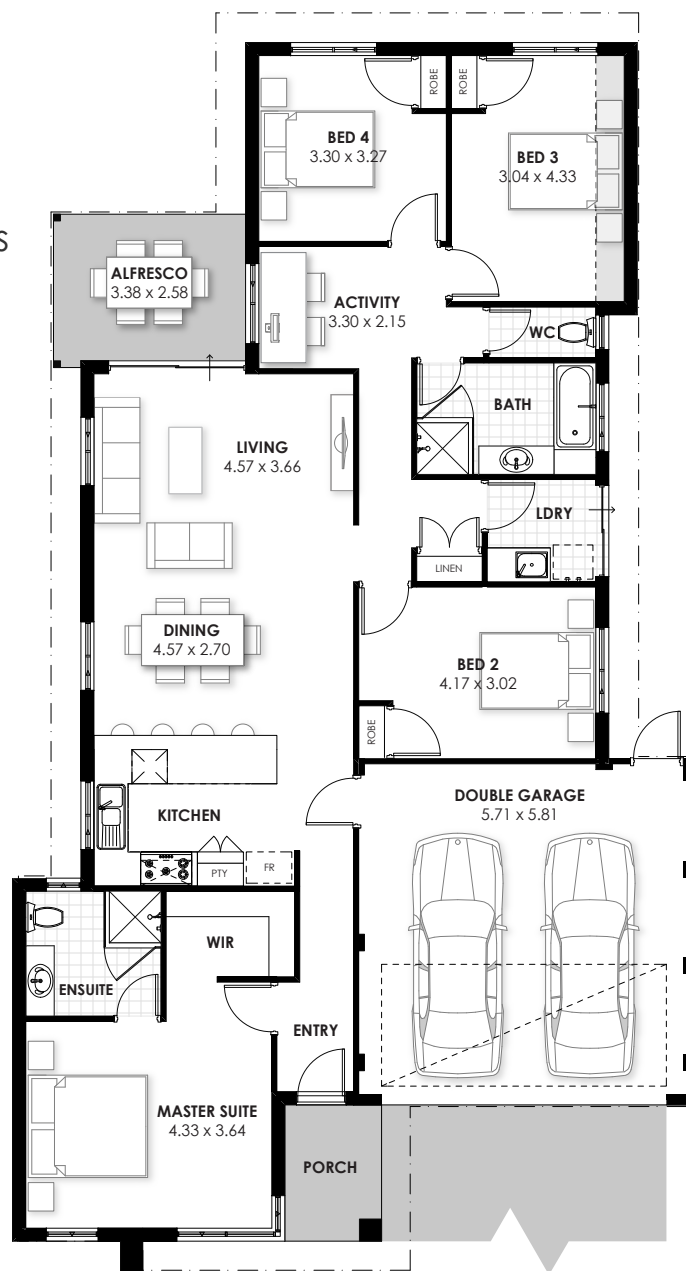
\*if you qualify for Government Grants  
Images for illustration only

# Forrestdale

- carpets with underlay
- choice of floor tiles, luxury vinyl or hybrid planks
- venetian or vertical blinds
- choice of colorbond or tiled roof
- Fisher & Paykel 900mm appliances
- LED lighting to every room
- custom kitchens with stone benchtops
- crossover, soakwells and paving
- 12 month maintenance period



THE ST LUCIA  
4 BED | 2 BATH | 2 CAR  
PHIL & TRACEY BARTLETT  
0411 444 808



As Move Homes is not the owner of the land, pricing and availability of the house and land package may change without notice. This includes but is not limited to provisional sitework costs, estate guidelines and council approvals. Images for illustration only. Visit our website for Terms & Conditions.