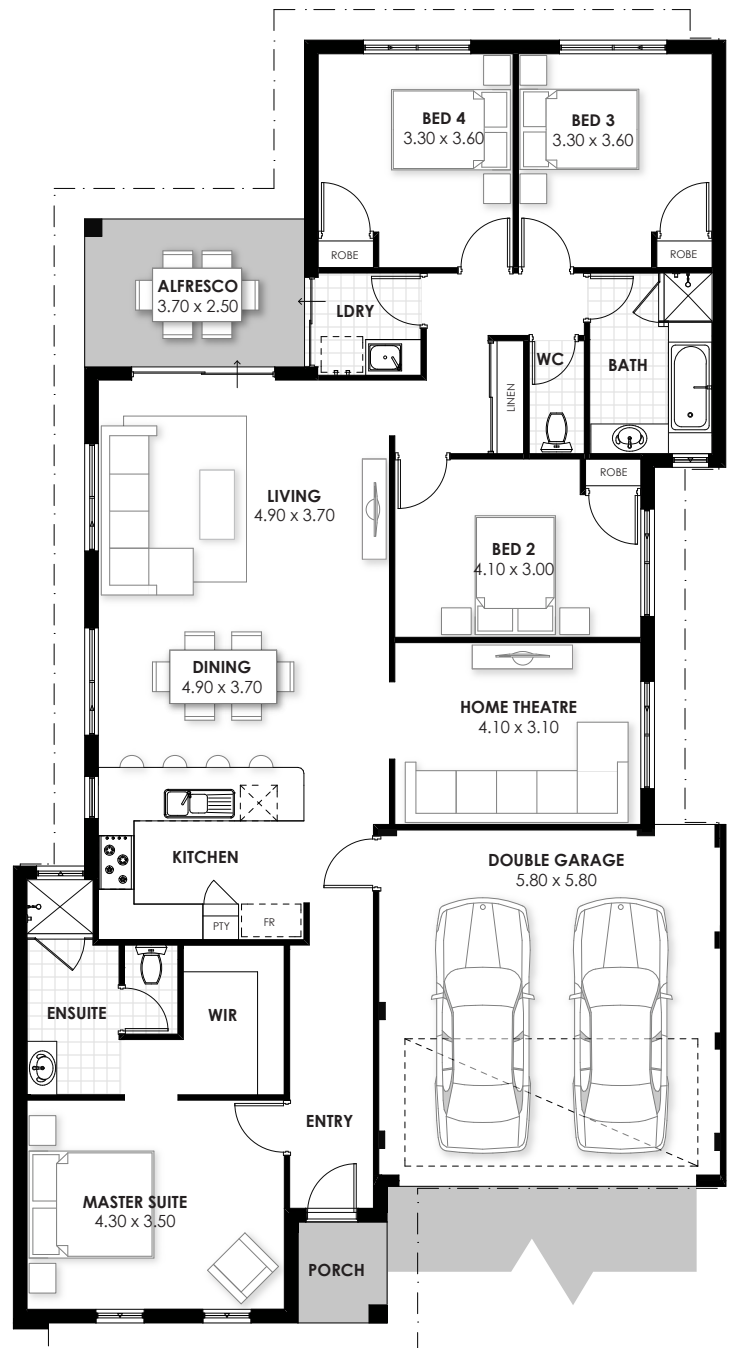




Upgraded elevation pictured  
Images for illustration only

# The Forillon

- choice of colorbond or tiled roof
- Fisher & Paykel 900mm appliances
- LED lighting to every room
- custom WA made kitchens with stone benchtops
- crossover, soakwells and paving
- chrome or black matte taps
- 12 month maintenance period



House	162m <sup>2</sup>
Garage	35m <sup>2</sup>
Alfresco	9m <sup>2</sup>
Porch	3m <sup>2</sup>
<b>TOTAL</b>	<b>209m<sup>2</sup></b>

Suits 12 x 25m blocks

